

1 The Drapery, Royal Mews, Southend-On-Sea, SS1 1DB

We are pleased to offer for sale this modern two bedroom first floor flat, set within this landmark building on the corner of Royal Mews and Southend High Street. Located just yards from Pier Hill and seafront, and conveniently situated for access to Southend Central mainline station. All of the rooms feature floor to ceiling windows which allows a light and airy feel. Features include a contemporary bathroom suite and a modern kitchen with integrated appliances. Offered with no onward chain. Keys held for viewings.



£220,000 Leasehold

MODERN FIRST FLOOR APARTMENT

LIFT SERVICE

LONG LEASE

CLOSE TO SEAFRONT

TWO BEDROOMS

TOWN CENTRE LOCATION

KITCHEN WITH INTEGRATED APPLIANCES

CLOSE TO MAINLINE STATION

Ref: 6810

ACCOMMODATION COMPRISES;

Accessed via security entry system into:-

COMMUNAL LOBBY

Stairs and lift service to first floor.

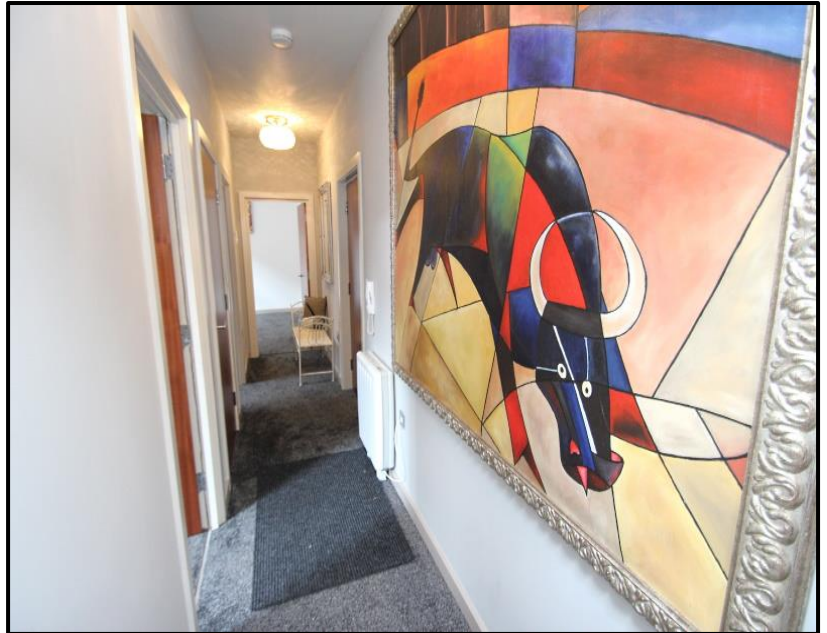
ENTRANCE HALL

Fitted carpet. Large storage cupboard housing hot water cylinder. Wall mounted electric heater.

LOUNGE/KITCHEN 21' 3" x 10' 2" (6.47m x 3.10m)

LOUNGE AREA

Floor to ceiling windows to the side aspect. Wood laminate flooring. Wall mounted electric heater. Smooth finish ceiling.



KITCHEN AREA

Fitted with a range of modern base and eye level units with roll edged work surfaces. Inset single bowl sink unit with mixer tap. Built-in electric oven with ceramic hob and extractor hood over. Integrated washing machine. Dishwasher and fridge-freezer. Wood laminate flooring. Recessed spotlights to smooth finish ceiling.



BEDROOM ONE 11' 8" x 11' 8" (3.55m x 3.55m)

Floor to ceiling windows to the side aspect.
Wall mounted electric heater. Fitted carpet.
Smooth finish ceiling.



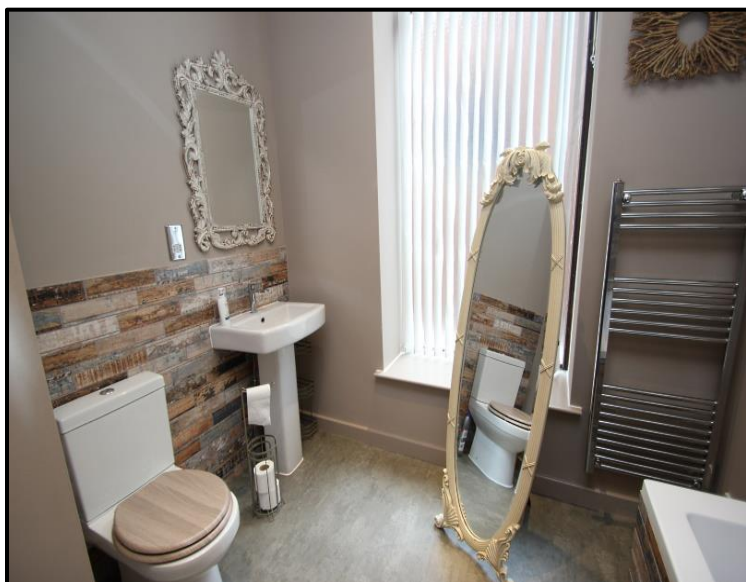
BEDROOM TWO 10' 7" x 7' 8" (3.22m x 2.34m)

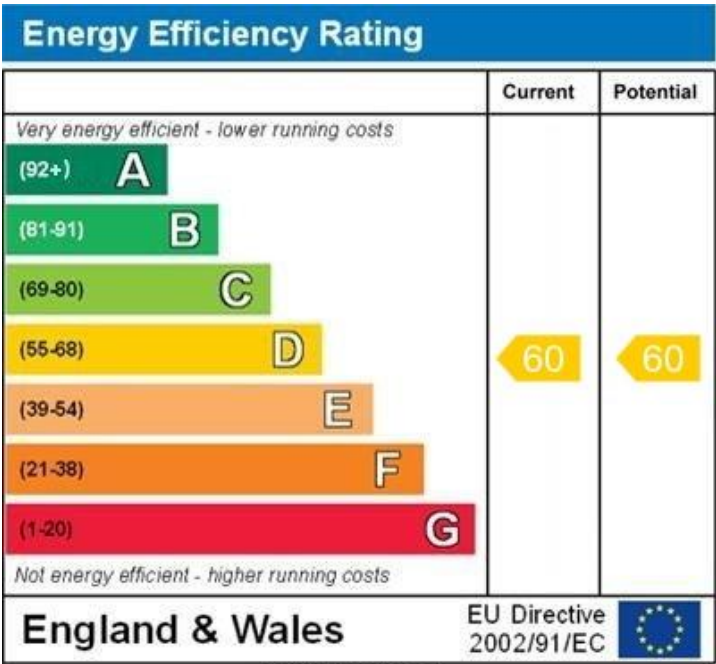
Floor to ceiling windows to the side aspect.
Wall mounted electric heater. Fitted carpet.
Smooth finish ceiling.



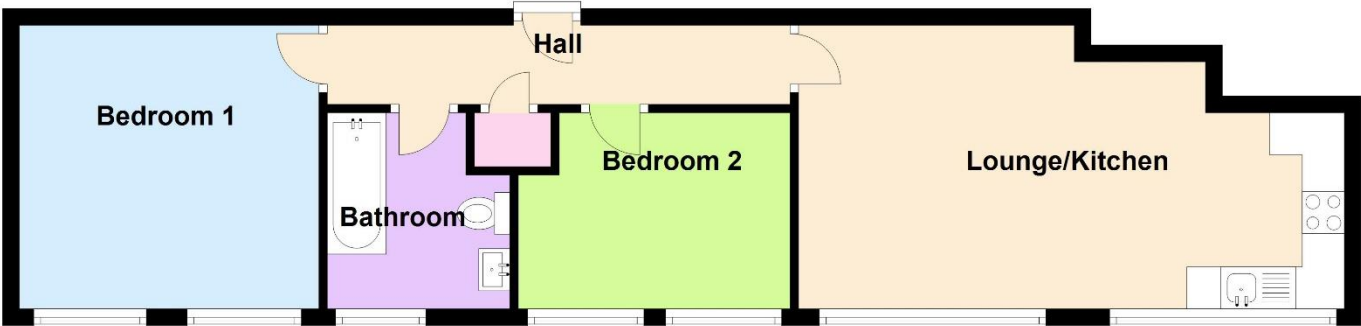
BATHROOM

Comprising of panelled bath with mixer tap.
Shower unit over and glass shower screen.
Pedestal wash hand basin. Low level w.c.
Chrome heated towel rail. Opaque floor to ceiling window to side. Wood laminate flooring.
Smooth finish ceiling.





First Floor



Scan the QR code to see our
properties to **BUY**



THESE PARTICULARS ARE FOR GUIDANCE PURPOSES ONLY AND DO NOT FORM PART OF A CONTRACT AND SHOULD NOT BE RELIED UPON FOR THEIR ACCURACY. ALL MEASUREMENTS ARE APPROXIMATE AND SERVICES, FITTINGS AND EQUIPMENT HAVE NOT BEEN TESTED BY US, AND NO WARRANTIES WHATSOEVER ARE GIVEN OR IMPLIED BY US. ALL NEGOTIATIONS TO BE CONDUCTED THROUGH HOPSON PROPERTY SERVICES LTD.